



## Benefits

- Rapid testing for SARS viral antigen within 15 minutes
- Facilitates patient treatment decisions quickly
- Simple, time-saving procedure
- No instrumentation required
- High sensitivity and specificity

## Ordering Information

Product Description	Specimen	Catalog No.	Format	Kit Size	Carton Size	Carton Volume	Gross Weight
Coronavirus Antigen Rapid Test	Nasopharyngeal Swab	GCCOV-502a ✓	Cassette	20 Tests/Kit	48 Kits/ Carton	690*410*455 mm	17.2 kg

✓ CE Marked

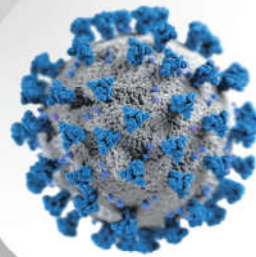


## Coronavirus Ag Rapid Test

### COVID-19 Overview

The novel coronaviruses belong to the  $\beta$  genus. COVID-19 is an acute respiratory infectious disease. People are generally susceptible. Currently, patients infected by the novel coronavirus are the main source of infection; asymptomatic infected people can also be an infectious source. The main symptoms include fever, fatigue, loss of smell and dry cough. Nasal congestion, runny nose, sore throat, myalgia and diarrhea are found in a few cases.

SARS viral antigen is generally detectable in upper respiratory specimens during the acute phase of infection. The Coronavirus Ag Rapid Test is a rapid screening tool to detect the presence of SARS viral antigen in the form of a visually interpreted result within minutes.



Healgen Scientific LLC  
001-713-733-8088  
www.healgen.com

L10053-01  
Revision date: 2020-08-10

## Product Information

The Coronavirus Ag Rapid Test Cassette (Swab) is an in vitro immunochromatographic assay for the qualitative detection of nucleocapsid protein antigen from SARS-CoV-2 in nasopharyngeal (NP) swab specimens directly or after the swabs has been added to viral transport media from individuals who are suspected of COVID-19 by their healthcare provider. It is intended to aid in the rapid screening of SARS-CoV-2 infections. The Coronavirus Ag Rapid Test Cassette (Swab) does not differentiate between SARS-CoV and SARS-CoV-2.

## Specification

Information	InDetail
Time to result	15 minutes
Storage	2-30°C
Shelf life	24 months
Specimen type	Nasopharyngeal swab



## Contents

- 20 Test cassettes
- 20 Sterile swabs
- 20 Extraction tubes and nozzle
- Workstation
- 2 Buffers
- Package insert

## Test Procedure & Interpretation

### Specimen collection

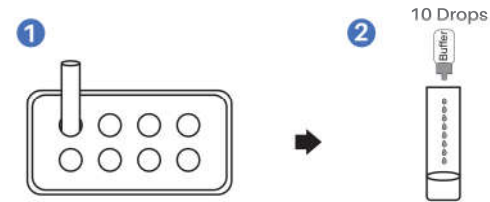
Use the nasopharyngeal swab supplied in the kit.

1. Carefully insert the swab into the nostril of the patient, reaching the surface of posterior nasopharynx. that presents the most secretion under visual inspection.
2. Swab over the surface of the posterior nasopharynx. Rotate the swab several times.
3. Withdraw the swab from the nasal cavity.

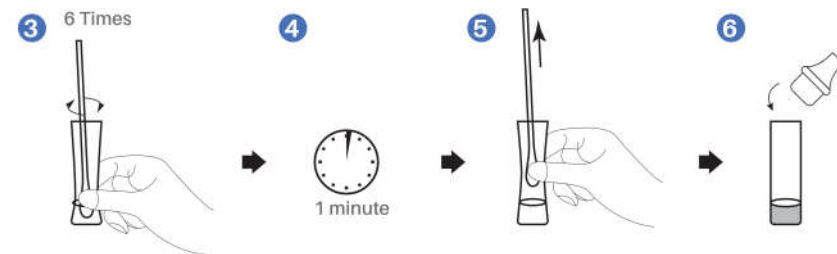


## Sample preparation

1. Insert the test extraction tube into the workstation in this product. Make sure that the tube is standing firm and reaches the bottom of the workstation.
2. Add 300  $\mu$ L (about 10 drops) of the extraction buffer into the extraction tube.



3. Insert the swab into the extraction tube which contains 300  $\mu$ L of the extraction buffer. Roll the swab at least 6 times while pressing the head against the bottom and side of the extraction tube.
4. Leave the swab in the extraction tube for 1 minute.
5. Squeeze the tube several times with fingers from outside of the tube to immerse the swab. Remove the swab. The extracted solution will be used as test sample.
6. Push the nozzle which contains a filter onto the extraction tube. Ensure the nozzle has a tight fit.



## Test procedure & interpretation of results

